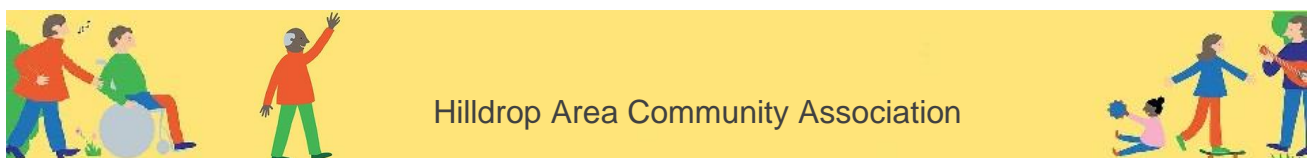




Hilldrop Area Community Association

ANNUAL REPORT 2018-19



About us

Hilldrop Area Community Association (HACA) is a registered charity (number 1164597) that seeks to enhance the interests and opportunities of our diverse community, and support social cohesion through providing services and activities with a focus on health and economic wellbeing.

We are a strategic neighbourhood partner located in the St George's Ward of Islington and based at Hilldrop Community Centre, an established multi-purpose community venue which offers a wide programme of activities and services that respond to local interests and needs. We are committed to involving the community in the shaping of our programme, and proudly work in partnership with many other local groups and organisations.

Our Association was first formed in 1986 in the wake of rising community turmoil. Local tenants of the surrounding Hilldrop Housing Estate brought together different groups and individuals who took over the management of an estate building that became Hilldrop Community Centre. The first Head of Centre was Bob Drinkwater, whose dedication and commitment saw him hold the post until March 2016 - an amazing 30 years. The strong community base on which we were founded has continued to this day, with staff and trustees all local to the area.

As a Strategic Neighbourhood Partner, we are committed to:

1. Providing strategic leadership within the local community
2. Coordinating a coherent and engaging neighbourhood-based offer of services and activities for local residents
3. Ensuring that local community facilities and assets are utilised to their full potential
4. Attracting external funding to facilitate the delivery of activities and services specific to the local community's needs

A message from our Head of Centre

Providing a community space, along with information, services and engaging activities, is what we do best. It's these that can ultimately make residents more confident, independent and resilient.

During 2018-19 HACA has continued to deliver on its aims and consolidated its practice. We go forward positively and excited about how we can support local people to share their wealth of experience and skills, enabling them to live well and thrive.

The next few pages highlight some of the great projects that we have delivered and the key services on offer to local residents at Hilldrop Community Centre

Elaine Maffrett – Head of Centre



A message from our Chair of Trustees – Brian Bench

I am pleased to report that the future of the centre is now stable and thriving and is as secure as any community provision can be in this changing world. The organisation has been rebranded offering a wide range of services and is considerably more visible now within the community.

This change is largely down to the three Heads of Centre Bob Drinkwater, Barbara Ludlow and Elaine Maffrett who have all given a great commitment to the centre and I thank them whole heartedly. There have been many other changes of personnel and all have played an important part in our success, including the numerous volunteers and trustees, who I will not name for fear of leaving someone out, but you know who you are!

The organisation is now a charity and has come through some challenges, but we are now in a much stronger position having secured a contingency that will ensure that we should be able to weather any unforeseen problems. We have more regular community user groups, including the Kingsley Organisation (who have recently set up their service in the old computer room), that further increase the diverse provision offered at Hilldrop.

We need to continue our fundraising and to constantly work to find solutions to ensure the future of the centre in an ever more challenging financial climate. The involvement of the local community is vital to our success. We are always looking to find new trustees with the capacity to give their time to projects and lead on new initiatives with the centre staff.

Brian Bench – Chair of Trustees

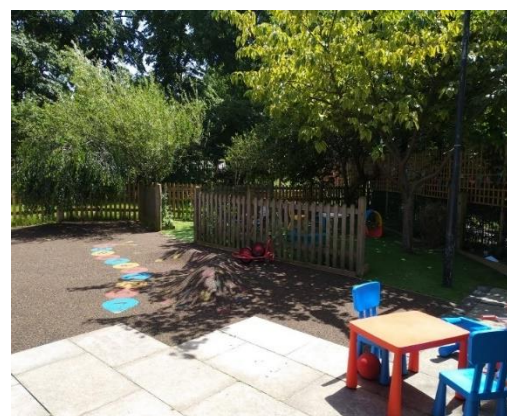


Affordable Community Space to Hire

Our accessible building includes a large and small hall, a training room, kitchen facilities and ample garden space, making it an ideal place for people to meet and take part in activities. We provide free space for residents' meetings and are able to offer discounted rates to small charities and local interest groups.

We especially welcome organisations and individuals that seek to provide high quality affordable activities that promote health and wellbeing, social activity and community participation.

We also offer affordable rates for private hire, revenue from which is directed back into improving facilities and funding new community activities and events.



Regular Hirers

Our regular hirers during 2018-2019 comprised a diversity of organisations covering a range of interests and activities. These included:

- Support groups delivered by the Islington Bereavement Service and Alcoholics Anonymous
- Advocacy and campaigning groups including Green and Black Cross, Transition Kentish Town and Sisters Uncut.
- Social groups such as the Bengali women's group, Olokoro community group and the Over 65's Film Club delivered by North London Cares
- Sport and physical activities including Capoeira Angola, Karate, Jujitsu, Zumba, Pilates and football sessions for under 5's.
- Church groups including Mountain of Fire Ministries and Solid Rock Ministries.



Meetings, Training and Parties

In 2018-19 we hosted a variety of organisations including the Centre for Criminal Justice, Reclaim Holloway, St George's Labour Party and St Pancras Hospital.

We were also delighted to partner with **Morgan and Wiseman** solicitors who delivered free Immigration Advice sessions to clients in north London. Through 2018-2019 we provided space for over 40 private parties. Since April we've hosted a further 21 parties and our popular venue is booked up 3 months in advance.

Due to our residential location we have moved away from large scale party bookings in order to focus on providing the ideal space for children's birthday parties. The summer months are the busiest for bookings, when our spacious garden and play area provide an ideal setting for family gatherings

Chain Reaction is in Town!

From January 2019 the **Kingsley Organisation** located to Hilddrop Community Centre. This fantastic charity supports disabled adults and provides opportunities for their personal development, education, training and independence. We are delighted to welcome Antonio Vocale and the Chain Reaction Team – led by CEO Helen Dayson – to the centre. Their presence has brought a great energy and a lot of fun to the centre.



Hilddrop Community Engagers Report

A grant from Awards For All enabled us to build on our promise of listening to the local community and developing a programme that matches their needs. This was initiated by training 17 people in the Participatory Appraisal research method. During the Spring and Summer of 2018, Kunbi Jones led the project by running multiple consultations with our users and the local community, specifically asking how we could deliver on health, employment, play, youth activities, and elderly people. This feedback is now informing our strategic planning and delivery for 2020-24



The Hilldrop Ukelele Band

The Band rehearse weekly at Hilldrop and always welcome people to pop along and join in the sessions for a sing along. Over the past year they have played in a variety of settings including residential care homes, local community events, as well as at Hilldrop Centre open days and Great Get Togethers. Other gigs have included the turning-on of the Tufnell Park Xmas lights; the annual Islington Word festival at Sadler's Wells; the Council's Carer's Awards at Islington Assembly Hall; and appearing at All Change Arts.



Under-fives and Family Saturdays

Our Stay & Play and Toy Library sessions are an important part of our delivery, providing a place for families with young children to come together, have space to play and try out new toys and games. Through these groups we actively seek to support parents with early help and information, as well as sign posting to local children's centres and under-fives services. We have also been delivering Soft Play Saturdays every two to three months, featuring Family Learning Workshops delivered by Islington's Adult and Community Learning team, including a popular Christmas wreath making workshop which we hope will become a regular fixture of our calendar.

Play Projects

Our After School Club has got bigger and better with lots of fun and exciting activities thanks to our new Play Projects Manager, Iola Isaac, who has bought in a number of improvements around safe and free-flow play. Iola and her team have increased attendance, improved resources, and created a bright, fun and engaging environment for children.

Holiday Play Schemes are also very popular with new activities and trips out – Ruislip Lido was lots of fun and enjoyed by both staff and children!



Hilldrop Peace Garden

Over the course of 2018-19 we saw our gardens transformed into a completely new space, safe and welcoming for all that use the centre. Securing local development funds, and with a generous contribution from the Co-op, we have been able to improve the local landscape and start to deliver on opportunities for local people to benefit from the wellbeing aspects of gardening. We have a wonderful new soft surface area for children to play on and a sensory garden which will develop and grow; wooden benches and flower beds that burst into life with poppies during spring. A big thank you to Dick Musckett, our Gardening Volunteer, who has also improved the front of the centre with help from corporate volunteers recruited via The Big Alliance. We're also grateful for the help and support of Franie Smith at We Can Grow, whose advice and care with our pond has been fantastic, along with the young people from Holloway School who have helped to look after it.



Basis of Independent Examiner's Report

I carried out an examination in accordance with the General Directions given by the Charities Commission. An examination includes a review of the accounting records kept by the charity and a comparison of the accounts presented with those records. The examination also includes consideration of any unusual items or disclosures in the accounts and seeking explanations from the Managers and Trustees concerning any such matters. The procedures undertaken provided as much evidence as would be required in an audit and, consequently an opinion is given as to whether the accounts present a 'true and fair view' and the report is limited to those matters set out in the statement below.

Independent Examiner's Statement

In connection with my examination, no matters have come to my attention that are materially significant.

In my opinion the financial statements

- i) give a true and fair view of the state of the charity's affairs as at 31 March 2019 and of its profit (loss) for the year then ended have been properly prepared in accordance with SORP FRS 102 as adopted by the Charities Commission and Section 130 of the Charities Act 2011 and
- ii) to which, in my opinion, attention should be drawn in order to enable a proper understanding of the accounts to be reached.

Andrews Tete-Donkor, MBA, ACIE

Glandy & Co (Accountants)

43 Eckington House

London

N15 6SH



FINANCE

	Unrestricted General Fund £	Cyclical Maintenance Fund £	Restricted Fund £	Total 2019 £	Total 2018 £
INCOME					
<i>Incoming resources from generated funds</i>					
Grants and other donations	7640		102728	110368	107079
Other income	79080			79080	59247
<i>Incoming resources from charitable activities</i>					
Income from services provided				0	0
	86720		102728	189448	166326
EXPENDITURE					
<i>Cost of generating funds</i>					
Fundraising and project development	31972		137457	169429	162776
<i>Charitable activities</i>					
	31972		137457	169429	162776
Net Income/ (Expenditure)	54748		-34729	20019	3550
Transfer between funds					
Other Recognised Gains/ (Losses)					
Realised gain on investment					
Net Movement in Funds	54748		-34729	20019	3550
RECONCILIATION OF FUNDS					
Balance Brought Forward 31Mar 2017	6170		0	6170	2620
Balance Carried Forward 1st April 2018	60918		-34729	26189	6170



...And finally, we would like to take this opportunity to thank the Hilldrop Staff, Volunteers and Trustees who have all contributed to developing the centre and organisation, enabling it to flourish. Without the support and dedication of these committed individuals St Georges ward would be a much duller place!

Staff and Volunteers

Elaine Maffrett (from Sept 2018) – Head of Centre

Barbara Ludlow – (till July 2018) – Head of Centre

Natasha Harper (from Feb 2019) – Centre Administrator

Beth McGowan (till Jan 2019) – Centre Administrator

Sophie Yau-Sylvestre – Book Keeper

Iola Isaac (Sept 2018) – Play Manager

E P Thompson – Deputy Play Manager

Jahanara Rahman – Senior Play Worker

Mick Carroll – Play Worker

Sharon Doyle – Play Worker

Amy Marciano – Play Worker

Lance Symister – Play Scheme Worker

Rani Bibi – Stay & Play Co-ordinator

Arifa Chowdhuri – Under Fives Worker

Nasrina Ahmed – Under Fives Worker

Gladys Orleans – Cleaner

Nii Plange – Warden

Dick Muskett – Garden Volunteer

Trustees

Brian Bench – Chair

Anjit Choudhuri – Treasurer

Sarah Martin – Secretary

Kunbi Jones

Susanne Lamido

Marissa Campbell

Stephen Moorby

Sandra King

Cllr Satnam Gill – co-opted trustee

Cllr Trica Clark – co-opted trustee

Funders and Supporters

Islington Councils VCS Team

Islington Councils Local Initiative Fund

The Co-operative

NISA 'Make a Difference Locally'

National Lottery - Awards for All

